



**BMW AROUND THE ISLAND RACE (ATIR) 2023**  
**COASTAL ROWING**  
**Race Bulletin 2**

**Saturday 18th and Sunday 19th November 2023**

A warm welcome to the BMW Around the Island Race, which will take place next weekend. We have three races during the weekend and a total of 350 rowers joining this year. To help you and your team with final preparation, here is some additional information to help with your planning!

### **Use of Facilities at RHKYC**

Race participants may use the club and its facilities including restaurants from the 16<sup>th</sup> to 19<sup>th</sup> November. To make this easier for you, we suggest you apply for a Visitor Card. Overseas teams may use either credit card or Octopus form. And for local teams, please use the Octopus version. For overseas teams, please submit your forms on or before Wed 15<sup>th</sup> November.

Forms are attached.

### **Indemnity form**

If you have yet to send in your indemnity form, please do so as soon as possible? You will need this in order to race. Sign up here:

<https://rhkyc.iotform.com/232571846298872>

### **Support boat**

Any teams for the Iron and Relay race still waiting to confirm Support boats, please contact the agency below. If you have any questions

Contact: Carmen Lee

Standard Boat Agency Ltd

Tel: 2570 1792

Fax: 2578 3878

Email: [standardboat@biznetvigator.com](mailto:standardboat@biznetvigator.com)

### **Rowing Practice Sessions on Friday**

Boats will be allocated prior to race day so if you would like to come down for a practice row, there will be an opportunity to do this. Details to follow shortly.

## Race Briefing

Time : **1800hrs on Thu 16<sup>th</sup> November.**

Location : Regatta Room, Kellett Island

The race briefing with cover details of all three races; Iron, Relay and 10K. On arrival, please follow directions to the Regatta Room.

ATIR Race Tops will be available for collection **before** the briefing so please arrive in plenty of time to avoid queueing.

As space is limited at the briefing, we ask that only Team managers and coxes attend if you are entered in the Iron and Relay races and for the 10K Short course, one member of each team please. It is mandatory that at least one person from each team attend.

## Welcome Party

Time : **1900hrs on Thu 16<sup>th</sup> November**

Location : Main Lawn, Kellett Island

The welcome party is open to all racers and managers so please come and enjoy the free Chinese style buffet and drinks. We also have some local entertainment being planned so don't miss out on this and the opportunity to meet with your fellow racers.

Members of the Race Organizing Committee will be attending in case you have any last minute questions.

## Race day schedule

A detailed schedule will follow before race day.

### Saturday 18 Nov (Iron)

0700	Race control desk opens
0730-0830	Support boats launch from the pontoon
0730-0830	Race boats launch from the slipway (Note 1).
0800	Race start (by category)

### Sunday 19 Nov (Relay)

0630	Race control desk opens
0700-0715	Support boats launch from the pontoon
0700	Race boats launch from the Slipway (Note 1).
0730	Race start

### Sunday 19 Nov (10K Race)

1330	Race control desk opens
1430	Race boats launch from the Slipway (Note 1).
1500	Race start

**Note 1:** boats should be on the water at least 30mins prior to scheduled start time.

## Advance Weather Forecast for Race Weekend

Min temperature	19°C
Max temperature	24°C
Sea temperature	24°C
Humidity	60-70%
Wind speed	20-35 Kmh
Wind direction	North easterly

*Note: the above info will be updated at the Race Briefing*

## Tides

18 Nov	Low tide	0.7m at 0701hrs
	High tide	2.5m at 2310hrs
19 Nov	Low tide	0.7m at 0814hrs
	High tide	2.35 at 2300hrs

## Contact Information

If you require any further information at this stage, then please send an email to [ATIRRowing@rhkyc.org.hk](mailto:ATIRRowing@rhkyc.org.hk) or [rowing.manager@rhkyc.org.hk](mailto:rowing.manager@rhkyc.org.hk)

END

Organised by



Co-organised by



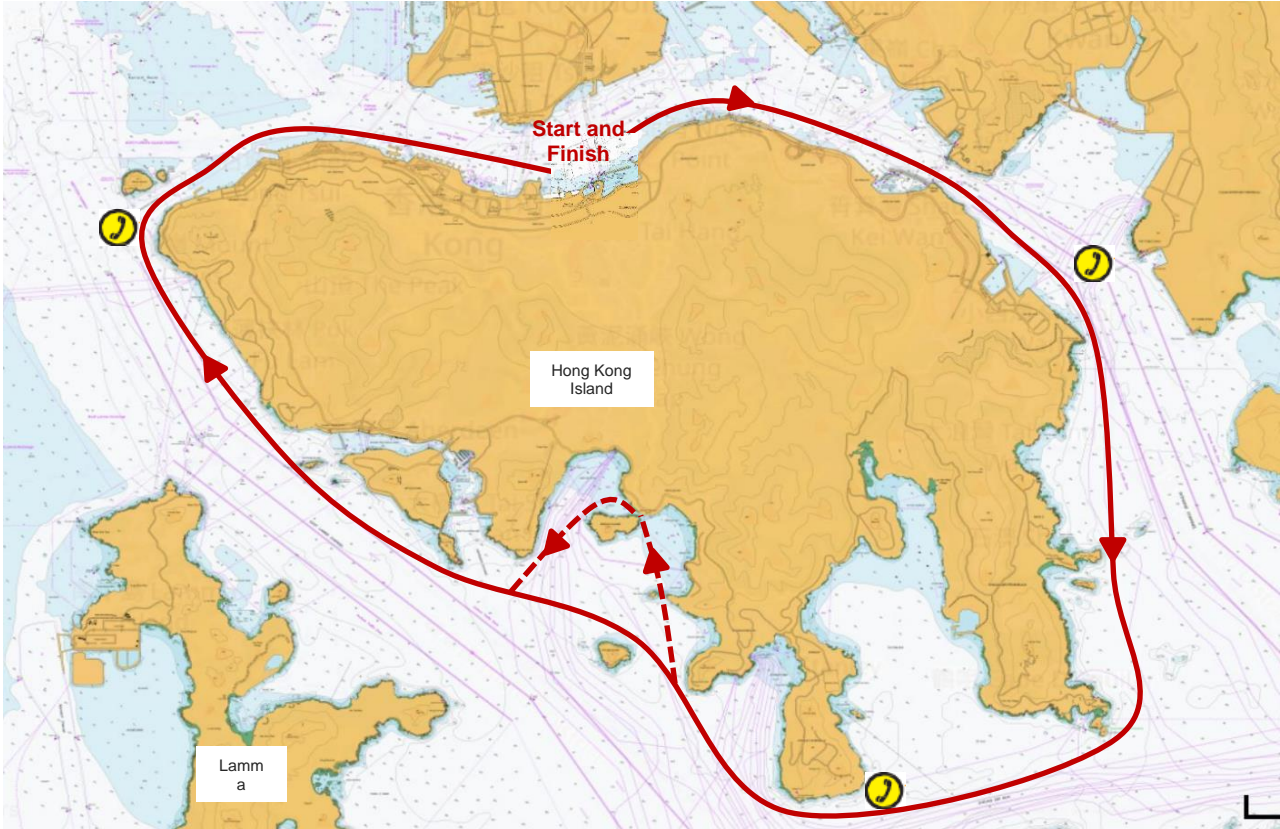
Supporting Organisation



## APPENDIX 1

### ATIR Race Course – 45km

Full details of the race course along with the safety briefing document will be circulated to participants before race day.



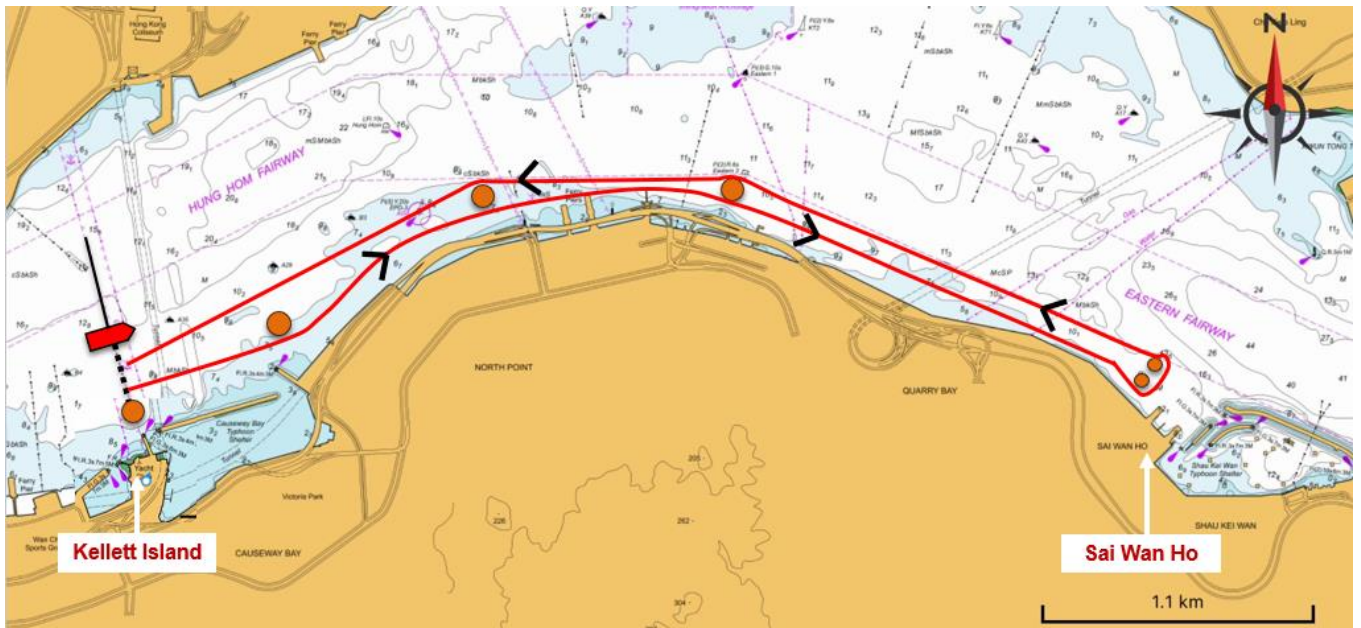
**Note;**

After Stanley bay:

- Iron crews – stay north of Round Island and continue in direction of Ap Lei Chau.
- Relay crews - head to Middle Island pontoon for crew change

## Race Course – 10km Harbour Race

Full details of the race course along with a safety briefing document will be circulated to participants before race day.



END